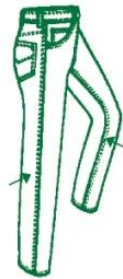


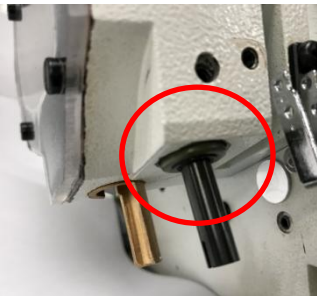
JJ3116GE-03X-5X6



Two-needle safety stitch machine for jeans, heavy duty work clothes etc.



Features



Needle bar oil seal is applied

This mechanism protects the fabric from the oil stain



DLC coated needle bar and upper looper holder

ensure durability and reliability while the machine runs in high speed.



Tractor presser foot

This specially designed presser foot is equipped as standard for this model. The front and rear parts of the presser foot are separate to help feeding of multi-layered material. It also prevents skip stitches with better feeding than the conventional presser foot. It is perfect for the sewing of heavy-weight materials, such as jeans and work wears.

Option devices

Horizontal chain cutter (with Venturi device)

instantly cuts the thread chain off at the end of the sewing operation.

This can save operation time, and labor cost.

The chain cutter is located on the back of the needle plate.



HTC(Horizontal chain cutter)



VD (Venturi device)

Pneumatic presser foot lifter

reduces the operator's stress and helps increase in productivity

Direct drive servo motor or belt drive servo motor

This machine can adapt the direct drive servo motor or belt drive servo motor.

Direct drive servo motor can save 75% of electricity bill than clutch motor.

Servo motor is easy to control. Hence, production efficiency can increase up to 120% .

Servo motor makes lower noise and lower vibration than clutch motor.



PL(Presser foot lifter)



DM(Direct drive motor)

Specification

Model	Application	Fabric Weight	Type of Needle	No. of needles	No. of threads	Needle Space	Over edge width (mm)	Stitch length (mm)	Diff. feed ratio	Presser foot lift (mm)	Max Speed (rpm)	Remarks
JJ3116GE-03X-5X6	Plain seaming	Ultra Heavy	#21	2	5	5	6	1~5	0.8~1.5	7	6500	tractor foot