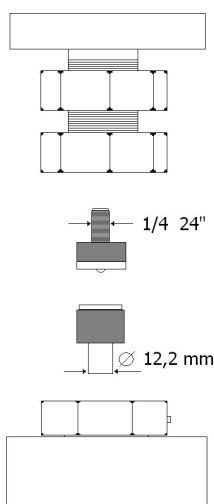


TECHNICAL SPECIFICATIONS OF TOOL HOLDERS



The dies (tools) for small parts can be purchased from the button supplier.

Possibility to have custom tool holders.

*a standard jeans button was taken as reference

The force required for the application is mentioned in the technical data sheet of the small parts.

PRODUCT DESCRIPTION	Bench pneumatic head with manual loading.
USE	Application of snap buttons, eyelets and small parts in general. Piercing of fabrics, leather and plastic sheets.
TYPE OF START-UP	Pneumatic pedal
CYLINDER	ISO Ø 80 Stroke 50 mm
AIR CONSUMPTION PER CYCLE	1,75 N/l
CYLINDER FORCE	350 KN - 8bar
APPLICABLE SMALL PARTS SIZE*	Ø max 17 mm
WORKING PRESSURE	Adjustable 3÷8 bar
TYPE OF ADJUSTMENT	Pressure reducer with pressure gauge
PROCESSING TIME	3÷4 " per cycle
SAFETY	Adjustable hand protection system
STANDARD EQUIPMENT	1 double-ended wrench
OPTIONALS	<ul style="list-style-type: none"> • Red light led positioning device (dot or cross) • Distance reference guide • Suction kit
CERTIFICATION	CE Labeling
WARRANTY DURATION	12 months
HEAD SIZE	18X34X47 cm
NET WEIGHT	20 kg
STANDARD PACKAGING TYPE	Box on pallet
PACKAGING SIZE	A= 60 cm B = 40 cm C= 38 cm
GROSS WEIGHT	25 kg

