



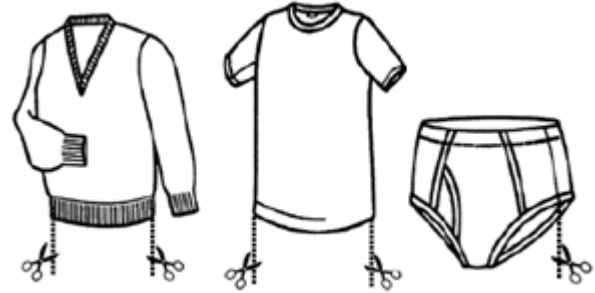
AUTO BACK LATCH OVERLOCK

KANSAI
SPECIAL

JJ3014GH-51M-2x4-VTC-FL



2 needle 4 thread, overlock machine equipped with Ho Hsing automatic back latch device



※Application : Underwear, knitwear, baby wear

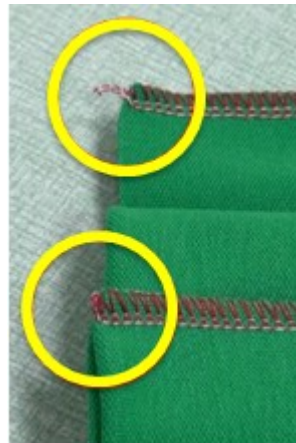
Features

Main advantages

- The machine can make plain seam, condensed stitch, back latch by touch screen control
- Shorter operation time than manual back latch
- Thread saving — as the length of chain is fixed
- Quality of seam — every seam exactly same



- Vertical chain cutter / Venturi device
- Pneumatic presser foot lifter
- Edge sensor
- D.D. servo motor
- Touch panel
- Control unit

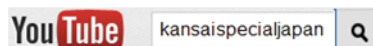


Conventional stitch

Automatic back latch stitch

Fabric weight	Type of Needle	No. of Thread	Gauge	Needle bar stroke	Max. Stitch length	Diff. feed ratio	Presser foot lift	Max speed
Light to medium	DCx27 # 9	4	2x4 mm	24.4 mm	3.8 mm	0.7—2	5.5 mm	7000 rpm

Headquarters & Factory
MORIMOTO MFG. CO., LTD.
Osaka, Japan
hqeigo@kansai-special.com



www.kansai-special.com/www.kansai-special.de

Central European Branch
KANSAI SPECIAL EUROPE GmbH
Düsseldorf, Germany
sales@kansai-special.de