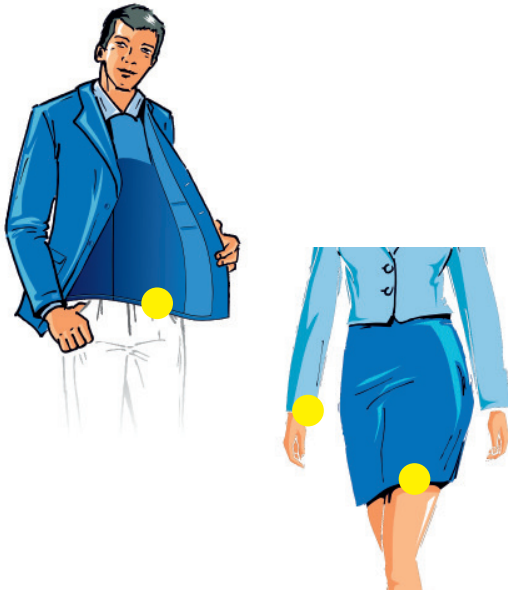


# 252/352

## Double Blind Stitch



### Experience the top of the class with our double-blind stitch sewing machines

Discover our highly elasticated seam - invisible from the inside and outside! Ideal for skirts and dresses, jackets and coats.

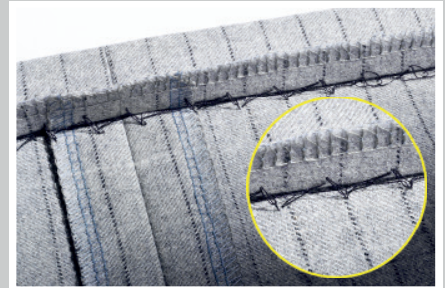
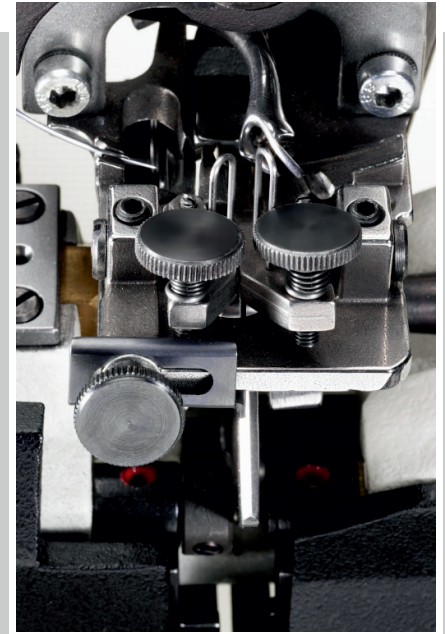
The fabric is fed in folded in an S-shape while the needle stitches alternately to the right and left of the fabric fold. This creates a "zig-zag" seam that remains perfectly concealed inside the hem. The result is an elasticated, loose seam that is not visible on the inside or outside and has no unsightly marks caused by thread pull.

The two independently adjustable spring-loaded plungers allow effortless cross-seam sewing. The plungers are pressed down so that the needle only stitches the top layers of fabric.

For a perfect finish on delicate fabrics, you can also under-iron the hem.

With a swiveling table and a cylinder arm for smaller circumferences on trousers, skirts and more, our machines offer maximum flexibility for your sewing needs.

Our double-blind stitch sewing machines offer optimum solutions for different material thicknesses. The MAIER 252 is ideal for medium to thick material, while the MAIER 352 is perfect for thin to medium material.





### Subclasses

Handling made easy with the additional edge guides

#### S-folder -26

Two edges are precisely guided. Adjustable distance of seam and fabric edge. Also suitable for sewing of cross seams.



#### S-folder -28

Three edges are guided precisely. Adjustable distance of seam, edge and fabric edge. Distance to the fabric edge even down to approx. 5 mm.



### Options and accessories

Top equipment makes the classes 252 and 352 the ideal solution for all double-blind hemming applications.

#### Mounting kit for motor -46

Simple installation, compact design - the mounting kit for EFKA and Ho-Hsing motors.



#### Digital stitch depth indicator -D

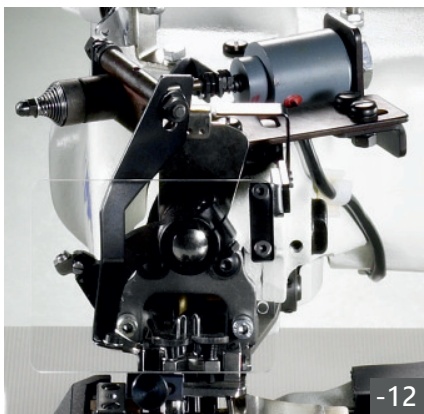
More efficient, accurate and simple - no more guessing stitch depth. The digital stitch depth display gives you precise control of your stitch depth. Reproducible settings and stepless adjustment.

#### Thread trimmer -12

Fast, safe and easy - the thread trimmer offers a high level of operating convenience and an impressive rationalization effect. Save valuable time with every seam.

#### Large add-on work support -35/2

The large add-on table offers the perfect solution for large-format sewing material. Whether curtains or other large-format sewing projects - with our add-on table you always have enough support surface.



#### Stitch knotting -48

No unravelling of the seam! A knot at the end of the seam prevents the seam from being unintentionally unraveled. The knot is made automatically when the thread is cut.

### Options and accessories

Top equipment makes the Classes 252 and 352 the ideal solution for all double-blind hemming applications.

#### **Presserfoot lift -PFL/P**

Making work easier! The pneumatic presser foot lift makes sewing much easier. Simply press the foot pedal and the presser foot lowers. You can concentrate fully on your sewing work.

#### **Sewing light -LED**

Our high-quality LED sewing light provides bright, even light directly above your sewing area. No more tedious squinting or shadow play - with our light you always have the best view of your sewing project.

#### **Technical Specifications**

Stitch description	Single-thread double chainstitch
Stitch type	105
Maximum Speed	2800 rpm
Recommended Speed	2200 rpm
Stitch length	3-8 mm, adjustable
Needle System	251LG
Cylinder circumference	23 cm
Work width	17 cm

#### **Packing dimensions head only**

Carton 62x45x36 cm  
Gross 26,0 kg  
Net 22,0 kg

#### **Packing dimensions complete machine**

Pallet 110x58x120 cm  
Gross 67,0 kg / Net 56,0 kg  
Volume weight 117 kg